

## MEPA3: Middle-Ear Power Analysis

Detect middle-ear pathologies, such as  
 OME (otitis media with effusion)  
 Otosclerosis  
 Ossicular disarticulations

Safe and effective for newborns  
 to adults

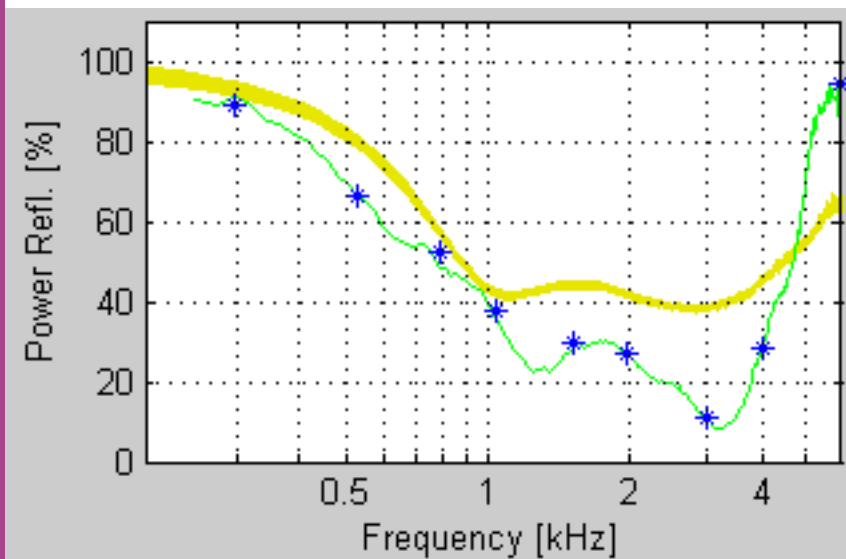
Takes just seconds

Portable, lightweight, easy-to-use

For use in hospitals, clinics, private practice,  
 and research institutions



### MEPA Reflectance Measurement



*Reflectance in a normal-hearing adult ear*

*Green line -reflectance measurement using a wideband chirp*

*Blue asterisks - reflectance measurement using tone stimuli*

*Yellow patch - reflectance in a B&K artificial ear.*

Add DPOAE and/or TEOAE for a complete middle- and inner-ear diagnostic system

# HearID R3.3 Technical Specifications – MEPA3 Module

## Clinical Reflectance System for Middle-Ear Power Analysis

### HearID + MEPA3 Specifications

To run HearID + MEPA3, you need a HearID software and hardware system with the MEPA3 Module and the Mimosa Acoustics probe calibrator.

Measurements include: Power Reflectance, Power Absorption, Power Transmittance, Acoustic Impedance, Acoustic Resistance, Acoustic Reactance, Acoustic Admittance, Acoustic Conductance, Acoustic Susceptance.

- Frequency range: 200 to 6000 Hz.
- Intensity Range: 0 to 80dB SPL.
- Sample Time: 0.1 to 10 seconds per point.
- Stimuli: Chirp & Pure Tone.
- Artifact Rejection.
- Real time display of signal and noise.
- Normative data.

Special Features:

- Customizable measurement protocols.
- Customizable display parameters.
- Retest a single test point.
- Overlay up to 8 measurements at once.

### Environmental Requirements

For valid measurements:

- The air temperature must be within +59°F to +95°F (+15°C to +35°C).
- Relative air humidity between 30-90%.
- Ambient noise should be minimal; however, a sound-treated booth or room is not necessary.

### Regulatory

HearID MEPA3 has cleared the FDA 510 k Pre-market Notification process and is CE marked.

### HearID + MEPA3 Hardware

- Mimosa Acoustics probe calibration cavity set.
- 24-bit proprietary PC-Card; used for digital-signal processing.
- ER10C sound probe from Etymotic Research.
- Probe-adapter cable to connect the probe to the PC-Card.
- Disposable foam and rubber eartips for comfortable, stable, probe insertion. 8 sizes available, suitable for infants to adults.
- Cutoff 2cc syringe, for use as a test cavity.
- Weight: System weighs less than 5 ounces.
- Dimensions: all components fit into a rugged carry case measuring 9.25 x 8 x 4.5 inches.
- Probe cable length: 6 feet.
- Laptop computer not included but needs to meet the minimum requirements below.

### Computer System Minimum Requirements

- IBM™ compatible laptop with an available PC-Card cardbus (Type II) slot.
- At least 512 MB of RAM.
- Pentium™ class processor at least 1.3 GHz.
- CD-ROM drive.
- Color laptop screen.
- At least a 10 GB hard drive.
- Microsoft Windows 2000, XP, or Vista Operating System.
- Recent version of Adobe Reader (for displaying the electronic manuals).

### Order Information

Product Identifier: HearID+MEPA3

### Contact Mimosa Acoustics

Mimosa Acoustics, Inc.  
60 Hazelwood Drive, Suite 209  
Champaign, IL 61820-7460, USA  
Phone +1-217-367-9740  
Fax: +1-217-367-9741  
Email: [sales@mimosaacoustics.com](mailto:sales@mimosaacoustics.com)  
Web: [www.mimosaacoustics.com](http://www.mimosaacoustics.com)

For Software Version: 3.3  
HearID+MEPA Brochure Version: 1.2  
Date: February 24, 2008

*Subject to change without notice*



0086

© Mimosa Acoustics, Inc.