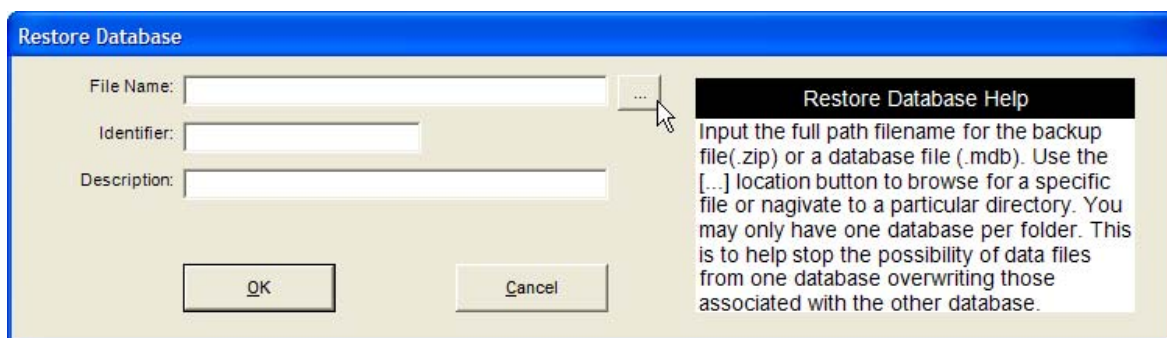


HearID Quick Start — How to Restore and Use Old Databases

These Quick Start Notes cover the most common procedures. They complement, but do not take the place of the manuals. We recommend reading the manuals fully before testing patients.

Restoring a database from HearID R3.1 through to HearID 5.0

- Once the database is converted, you will not be able to use it with your old version of HearID. We recommend making a copy of the database rather than upgrading the original database.
 - Locate the folder in which your old database and accompanying data files are stored.
 - Backup the database and data files.
 - **Copy** the data folder to a new location for use with your new version of HearID.
 - For HearID R3.4 and later, the database location is shown under menu Database|Details and the folder can be opened in Explorer under menu Database|Directory.
- Log into any database in the new **HearID** for which you have **Administrator** privileges (e.g., Default or Sample databases).
- From the **Database** menu, choose **Restore** for the **Restore Database** window.



- Selecting the browse button (indicated by the mouse cursor above) opens up a window where you can navigate to the folder in which the old database and associated data files are stored.
- Change the **Files as type** field to **Database Files (*.MDB)**. Navigate to the database location and select the database file you wish to restore. Choose **Open** to select the database for restoring.
- The **Identifier** and **Description** fields in the Restore Database window are filled in automatically, but may be modified accordingly.
- Choose **OK** to restore the database.
- From the **Database** menu, choose **Open** to access the restored database.
- See Section 1.3.5 in the General User's Manual for more details.

Upgrading from DP2000 v3.0, TE 2001 v3.0, or RMS v4.0 (beta) to HearID 5.x

- Databases created in earlier versions of DP2000, TE2001 or RMS must be manually upgraded to DP2000 v3.0, TE 2001 v3.0, or RMS v4.0 (beta) before upgrading to HearID 5.x. Check with your vendor if you are unsure of which version you are running.
- Follow the instructions above.
- Use the username: **Tester** to **Open** the database. Most likely the user name *Tester* will work.
- There is no password, so leave the password field empty.
- HearID will upgrade the database for use with 5.x. **Follow the onscreen instructions.**
- After the upgrade, the default Username is *Admin* and the default password is *password*.
- See Section 1.2 in the General User's Manual on how to set up new Users.