

## TE: Transient-Evoked Otoacoustic Emissions

Non-invasively and objectively measure inner-ear function

Safe and effective for newborns to adults

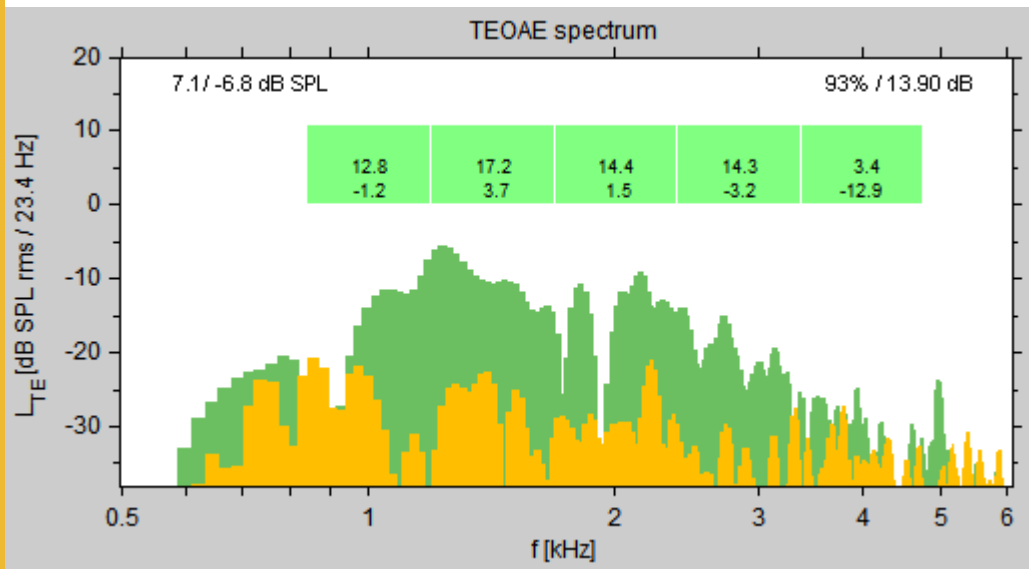
Takes just seconds

Utilize factory preset protocols or design your own

For use in hospitals, clinics, private practice, and research institutions

Instrumentation employs

- a series of stimuli (clicks or chirps)
- in-the-ear probe calibration
- greater control of test parameters in research mode



Normal-hearing adult showing a Pass result in 5 bands.

Green patch  
 - TEOAE spectrum

Orange patch  
 - noise floor

Add MEPA3 reflectance for a complete middle- and inner-ear diagnostic system

# HearID R3.3 Technical Specifications – TE Module

## Transient-Evoked Otoacoustic Emissions System

### HearID + TE Specifications

To run HearID + TE, you need a HearID software and hardware system with the TE Module.

- Clinical and Research modes.
- Preset measurement protocols included.
- Synchronized spontaneous otoacoustic emissions mode.
- Stimulus Types: rectangular click, biphasic rectangular click, Gaussian click, differentiated Gaussian click, flat group-delay chirp, linear group-delay chirp, Dau group-delay chirp, Shera group-delay chirp.
- Customizable stimulus bandwidth, duration, level, white or pink spectrum, polarity.
- Adjustable inter-stimulus interval.
- Linear and non-linear stimulus presentation modes.
- Adjustable number of passes and maximum rejected passes.
- Adjustable high and low pass TEOAE response filters.
- Adjustable response window.
- Adjustable graphical noise rejection level.
- Observe stimuli acoustically and electrically in real time.
- In-the-ear probe calibration, including option for spectrum compensation.
- Pass / Refer clearly indicated.
- Protocols can be customized and saved.

### Environmental Requirements

For valid measurements:

- The air temperature must be within +59°F to +95°F (+15°C to +35°C).
- Relative air humidity between 30-90%.
- Ambient noise should be minimal; however, a sound-treated booth or room is not necessary.

### Regulatory

HearID TE has cleared the FDA 510 k Pre-market Notification process and is CE marked.

### HearID + TE Hardware

- 24-bit proprietary PC-Card; used for digital-signal processing.
- ER10C sound probe from Etymotic Research.
- Probe-adapter cable to connect the probe to the PC-Card.
- Disposable foam and rubber eartips for comfortable, stable, probe insertion. 8 sizes available, suitable for infants to adults.
- Cutoff 2cc syringe, for use as a test cavity.
- Weight: System weighs less than 5 ounces.
- Dimensions: all components fit into a rugged carry case measuring 9.25 x 8 x 4.5 inches.
- Probe cable length: 6 feet.
- Laptop computer not included but needs to meet the minimum requirements below.

### Computer System Minimum Requirements

- IBM™ compatible laptop with an available PC-Card cardbus (Type II) slot.
- At least 512 MB of RAM.
- Pentium™ class processor at least 1.3 GHz.
- CD-ROM drive.
- Color laptop screen.
- At least a 10 GB hard drive.
- Microsoft Windows 2000, XP, or Vista Operating System
- Recent version of Adobe Reader (for displaying the electronic manuals).

### Order Information

Product Identifier: HearID+TE

### Contact Mimosa Acoustics

Mimosa Acoustics, Inc.  
335 Fremont St.,  
Champaign, IL 61820, USA  
Phone +1-217-359-9740  
Fax: +1-217-359-9741  
Email: sales@mimosaacoustics.com  
Web: www.mimosaacoustics.com

For Software Version: 3.3  
HearID+TE Brochure Version: 1.3  
Date: June 29, 2010

*Subject to change without notice*



0086

© Mimosa Acoustics, Inc.